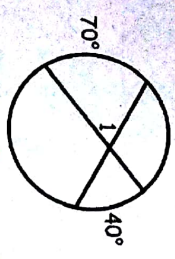
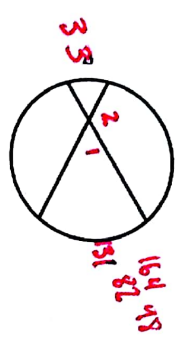


Name _____

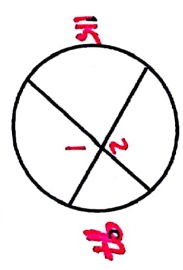
1. $m\angle 1 = 55$



2. $m\angle 1 = 82$



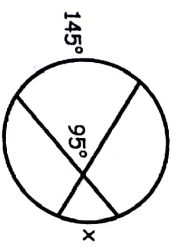
3. $m\angle 1 = 74$, $m\angle 2 = 74$



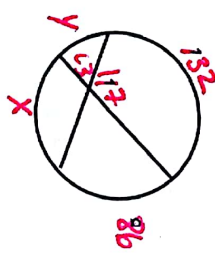
4. $m\angle 2 = 133$, $x = 53$



5. $x = 45$



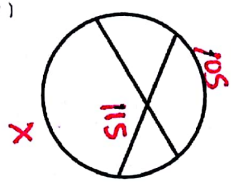
6. $x = 102$, $y = 40$



7. $x = 72$, $y = 94$

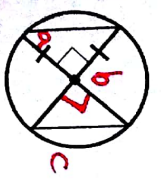


8. $x = 125$

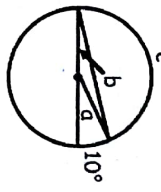


Find the measures of $\angle a$, $\angle b$, and $\angle c$.

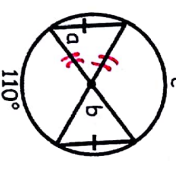
9. $a = 45$



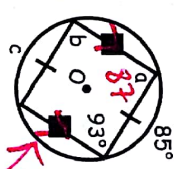
10. $a = 10$



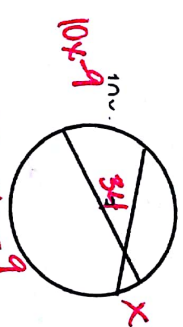
11. $a = 70$



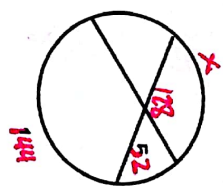
12. $a = 87$



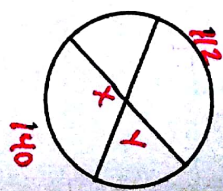
13. $x = 7$



14. $x = 112$

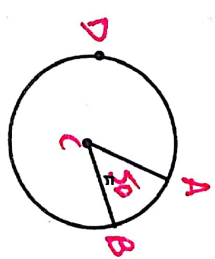


15. $x = 126$, $y = 54$

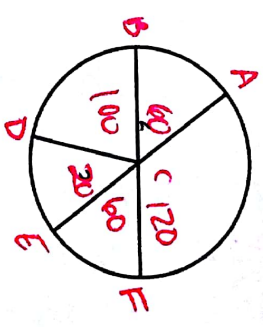


Decide if the following angles are Central, Inscribed, or Inside. Then find the value of the indicated measure.

16. $m\angle A = 50$, $m\angle D = 130$

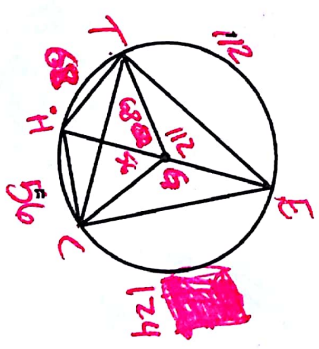


17.



- \overline{AE} and \overline{BF} are diameters.
- $m\angle AOB = 60$
- $m\angle BOE = 180$
- $m\angle EFC = 60$
- $m\angle CAF = 300$
- $m\angle FBE = 180$
- $m\angle BEC = 120$
- $m\angle AFD = 200$
- $m\angle AFE = 120$
- $m\angle EDF = 80$
- $m\angle AEB = 300$

18.



- $m\angle HEC = 28$
- $m\angle TEH = 34$
- $m\angle HT = 68$
- $m\angle TC = 124$
- $m\angle EGC = 124$
- $m\angle ECH = 180$
- $m\angle TGH = 68$
- $m\angle TGE = 236$
- $m\angle TEC = 62$
- $m\angle ETH = 90$
- $m\angle TCE = 56$
- $m\angle ETC = 62$